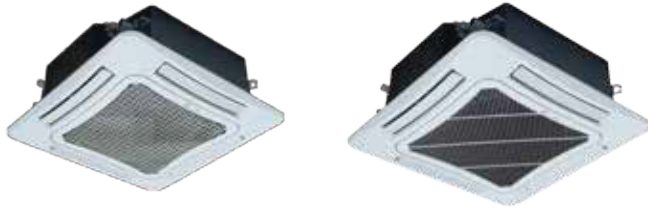


Fan Coil Unit

Cassette Type



Inner groove copper



Built-in drain pump



Washable filter



Anti-cold function



Quiet function



Multi fan speed



Compact design



Self-diagnosis

- Thanks to optimized air flue design that greatly improve the fan efficiency and lower the operation noise.
- Four directions airflow that makes an even temperature and humidity distribution.
- Evaporator moisture auto cleaning after power off to avoid mildew.
- Forced high speed fan operation under emergency condition.



Nominal test condition (temperature)				
Item	DB ()	WB ()	Inlet ()	Outlet ()
Cooling	27	19	7	12
Heating	20	—	50	40

2 Pipe Type

Model			FP-85XD/B-T	FP-102XD/B-T	FP-125XD/B-T	FP-140XD/B-T	FP-160XD/B-T	FP-180XD/B-T	FP-200XD/D-K	
Air flow volume (H/M/L)		CFM	471/382/324	600/559/529	694/588/529	824/735/676	912/824/765	1059/853/794	2000/1500/1000	
Capacity	Cooling/Heating	kW	4.50/5.60	5.00/6.50	6.00/7.80	8.00/9.00	8.70/10.00	9.50/11.00	12.00/14.20	
	Type	Ph/V/Hz	1/220-240/50	1/220-240/50	1/220-240/50	1/220-240/50	1/220-240/50	1/220-240/50	1/230/50	
Power system	Input	W	75	110	82	120	125	160	138	
	Water flow volume	l/s	0.21	0.24	0.29	0.38	0.42	0.45	2	
Water system	Pressure drop	kPa	24	36	24	30	30	34	30	
		Ft-WG	7.872	11.871	7.872	9.840	9.840	11.221	13.12	
Sound pressure level		dB(A)	39	49	43	50	51	50	55	
Connection pipe size	Water inlet & outlet	inch(mm)	G3/4	G3/4	G3/4	G3/4	G3/4	G3/4	G3/4	
	Condensed water drain	mm	33	33	33	33	33	33	31.5	
Body	Dimension (W D×H)	Outline	mm	840×840×190	840×840×190	840×840×240	840×840×240	840×840×240	840×840×320	840×840×320
		Package	mm	960×960×257	960×960×257	960×960×310	960×960×310	960×960×310	960×960×394	960×960×394
	Net weight/Gross weight	kg	25/33	25/33	27/34	27/35	27/35	32/41	33/42	
Panel	Dimension (W×D×H)	Outline	mm	950×950×85	950×950×85	950×950×85	950×950×85	950×950×85	950×950×85	
		Package	mm	1030×1035×118	1030×1035×118	1030×1035×118	1030×1035×118	1030×1035×118	1030×1035×118	
	Net weight/Gross weight	kg	7/11	7/11	7/11	7/11	7/11	7/11	7/11	
Loading quantity	40'GP/40'HQ	set	131/147	131/147	117/133	117/133	117/133	98/112	98/112	
Standard controller	Wireless remote	-	YB1FA(X-FAN)	YB1FA(X-FAN)	YB1FA(X-FAN)	YB1FA(X-FAN)	YB1FA(X-FAN)	YB1FA(X-FAN)	YB1FA(MOTO)	
Optional controller	Wired remote	-	Z4E351B	Z4E351B	Z4E351B	Z4E351B	Z4E351B	Z4E351B	Z4E351B	

*1: This product model is not fit for EU.